



directCONVERT

The Tiff printer driver directCONVERT creates image files out of any printing Windows application.

Convert your documents with directCONVERT to Tiff files. Just printout your documents using the print command, directCONVERT is compatible to all standard Windows applications and it has been used with Word, Excel, Powerpoint, Access, Visio, StarOffice, AutoCAD, SolidEdge and more for several years.



In a nutshell

- Supports all ordinary paper formats and resolutions.
- Effortless integration into your environment
- Easy to handle
- Perfect and professional output quality
- Easy and fast

Fig 1: Exporting Tiff from MS-Word

Are you at EasyCopy 8.1?

We recommend all users to be at release level date 4/2/07 or later:

Summary of Maintenance Releases since launch.

Maintenance release, April 02, 2007

Windows

- Easier installation procedure
- Use License Service
- ecdaemon no longer depends on registry settings

UNIX

- Add print queue from unix GUI

General

- JPEG - 22000 pixels limitation solved

Maintenance release, March 08, 2007

- EasyEMF problem on Linux fixed
- Stamp problem on AIX fixed

Maintenance release, February 16, 2007

Montage

- Application error when opening layout files (AIX, IRIX, and HP-UX) fixed

Maintenance release, January 31/February 02, 2007

Capture

- Capture instability on UNIX solved

Movie Creator

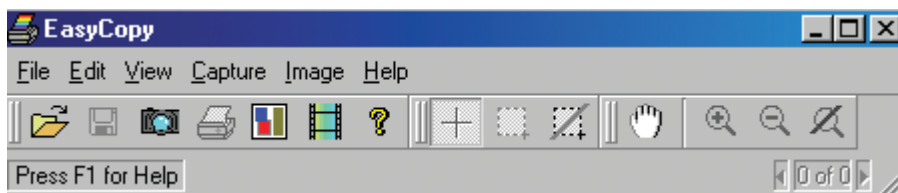
- High frame rate when creating movies - Now the bit rate will be set => quality improvement
- Save and load play list now possible

Supported File Formats

<ul style="list-style-type: none"> • AVI (MPEG 4.2) • CALS Raster Type 1 • CATIA Picture Files • CCITT Group 3 and 4 (TIFF class F) 	<ul style="list-style-type: none"> • CGM (option) • EMF/WMF • GIF 87a and 89a • Ideas Picture File (import only) 	<ul style="list-style-type: none"> • JPEG • JPEG 2000 • OS/2 Bitmap (BMP) • PCX • DXF (option) 	<ul style="list-style-type: none"> • PDF • PNG • Portable Bit Map (PBM) • DWG (option) 	<ul style="list-style-type: none"> • SUN Raster • Silicon Graphics RGB • Starbase 	
---	--	---	--	--	--

EasyCopy 8.1 launches a Movie Creator to give technical professionals more versatility

EasyCopy 8.1 is always designed to help you improve your work process and workflow. The new release offers an across platform Movie Creator and Zapview with support for gigabyte files. On Windows the EasyCopy printer drivers are now available, if you need to go beyond the Windows driver limitations.



Zoom and Pan your gigabyte files – realtime

With the new ZapView technology, Easycopy now internally works with a proprietary lossless compression technology. That means, you can move from detail to detail in your gigabyte raster files without delay. Zoom in to the important part for viewing, mark-up and annotation with the speed of lightning.

A ‘reference’ window gives you the perfect overview to zoom in on that very interesting detail that makes all the difference. The special EasyCopy scaling gives you a readable overview even though vastly downscaled.

Converting and plotting your gigabyte files

As our customers have moved to working with continuously larger files we have redesigned EasyCopy v. 8.1 to be able to handle very large files — both for conversion and to print or plot in 1:1. Whether you annotate or mark-up your CAD drawings or your GEO models — EasyCopy v. 8.1 will get the job done — fast and efficiently.

ScreenCopy – the good way – EASY

EasyCopy’s comprehensive screen capture functions now include Capture to Clipboard. The recently introduced AutoCapture has been complemented with a Movie Creator Window.

Movie Creator

With the Movie Creator you can open and preview a series of saved frames in any of the formats supported by EasyCopy, including SGI’s rgb files. You can delete or duplicate frames and add frames. When finished you save your selected frames as an AVI datastream which can be used in office products or viewed with a media player.

Masterpiece Graphics – Image Mark-Up Mode

When image mark-up mode in Montage is selected, the page size is set from the first opened image and the resolution of this image is maintained for later printing/plotting or saving. In this mode you can add highlights, graphics and text annotations without losing any detail in your original image. Perfect for marking-up CAD drawings or Log files.

ecprint for Windows

The well known EasyCopy UNIX print system is now also available on the Windows platform. In recognition of the fact that the Windows printer drivers sometimes fall short when it comes to professional printing and plotting.

PDF Stitch Mode

Toggle the PDF Stitch Mode on and combine a multi-page PDF file to one long file — useful if a log file is supplied as a multi-page PDF file and you want it printed as one file, eliminating the white spaces on the top and bottom of each page. Effective and simple.



Import AutoCAD Files in EasyCopy

EasyDWG from AutoGraph international (AGI) extends the capabilities of the EasyCopy programs (**EasyConvert Plus**, **EasyCopy Silver**, **EasyCopy Gold**.) Together with **EasyCGM**) EasyDWG provides support for the AutoCAD file formats DXF and DWG.

EasyCGM with EasyDWG converts engineering and mapping DWG and DXF files to the CGM graphics standard, which can be opened, converted and printed via EasyCopy.

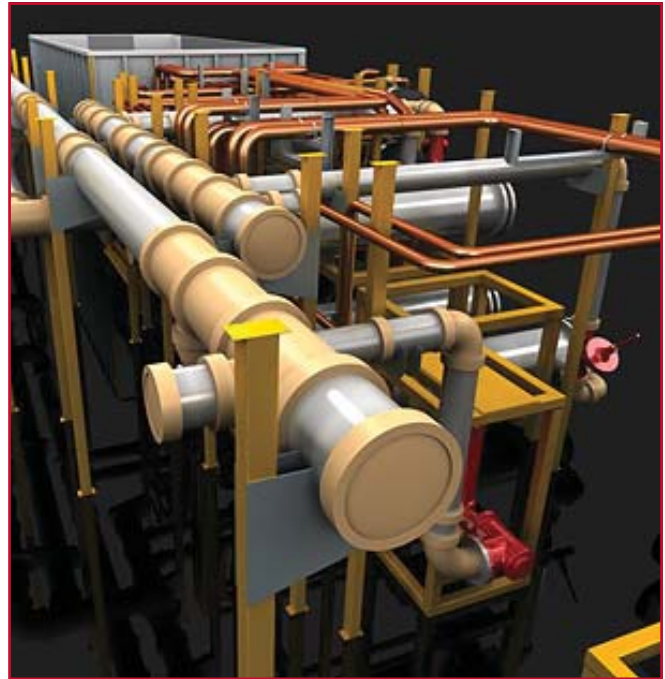
Now, AutoCAD users can make an archive of all data into a single, open standard format. EasyCGM with EasyDWG makes it possible to convert engineering and mapping DWG and DXF to the CGM graphics standard.

SDRC I-deas, Unigraphics, CATIA, ProE, Microstation all output a CGM file, AutoCAD does not.

There are other converters available on the market, but none of them do the job like EasyDWG.

It will retain complex primitives such as arcs, ellipses and circles.

EasyCGM with **EasyDWG** produces an ATA compliant version 3 or version 4 CGM and Web CGM. Callouts in the DWG or DXF file will be converted to WebCGM hotspots. There is simply no higher quality converter in existence than EasyDWG. Platforms: Microsoft Windows XP/2000/NT/98 Solaris, SGI and HP-UX. (UNIX converters operate in “command line” mode providing flexible integration to meet work flow requirements.) Import: DWG, DXF Export: ATA CGM, CALS CGM, ISO CGM V1-4, WebCGM



Supported Platforms

Linux (i386 or Intel IA64)

Solaris (SPARCstation) 2.6+

Microsoft Windows XP/2000

(UNIX converters operate in “command line” mode providing flexible integration to meet work flow requirements.)

Question &

Question:

Windows installation Question:

On Unix, our licenses seem to work fine from the client side, but not on Windows.

Answer:

Depending on how EasyCopy was installed at your Windows network, you will have to install the passwords once or several times:

If you have installed EasyCopy as a shared (Network) installation on one shared drive, you will have to install the passwords once through the Options->Password dialog (running the ec.exe program).

If you have installed EasyCopy as a single user/client/locally at all the client machines, you will need to install the passwords at all the machines in the same way as mentioned above.

You will NOT have to install the password at a Windows License Dispatcher machine and run “ecmonitor.exe start” from the EasyCopy Start dialog, as you already have one license dispatcher running at your Unix machine. The Windows machine will also refuse to start the license dispatcher daemon (ecdaemon.exe) as the password will not match the actual IP address for the Windows machine.

Conclusion: Start the Unix License Dispatcher, install the password(s) at any client (Windows and Unix), it will use the password to look up the IP address for the Unix license dispatcher, and get the license required (if any free). You can use the Help->On Version dialog from Unix and Windows to see the license status, or the “eclic” command from Unix or Windows to do the same. Hopefully the above will help you get EasyCopy for Windows up and running smoothly.

Supports All Major Platforms

• **Windows 2000**

• **Windows XP**

• **Solaris**

• **AIX 4.3+**

• **Linux**

• **IRIX 6.5+**

Compatibility

AGI and Camcorp maintain a partner relationship with hardware and software vendors (HP, IBM, SUN, SGI, Microsoft, EDS, Catia, Unigraphics, Minolta) to assure compatibility with AGI’s most recent offerings.

Hot Line & On Site Support

C.A.M. Corporation is a distributor and help desk for the AGI’s EasyCopy family of products. Camcorp maintains a hot line desk and staff backed by AGI’s support group to offer problem solving and training of the EasyCopy products.

Support available at support@camcorpusa.com or 810.231.2883.